

POWER YOUR FUTURE

Cummins Generator

LG110C

6BTAA5.9-G2

Prime Power: 110KW/138KVA

Standby Power: 121KW/151KVA



GENERATING POWER SOLUTIONS

Increased availability for new operations

Reliable, robust and versatile generator.
Ready to deliver power for a next job.

Increased uptime during operations

Once installed on the end-user-site, the generator will be ready to run: "peace of mind" operation.

Reduced transport and installation costs

The compact and robust design with integrated transport features enables faster and safer transport and installation.

Reduced service & maintenance costs

Longer service intervals.
Quicker and more efficient service jobs.

Premium resale value

Designed and built to last.

SAFETY

- Operate safely in accordance with proper operation manual.
- To prevent trouble and accidents, perform daily and preventive maintenance checks without fail.

Cummins Series 60HZ

25KVA--1400KVA

Technical Data

LG110C

Model		LG110C
Rated prime power	kva	138
Rated standard power	kva	151
Rated voltage line to line	V	220/127
Rated current	A	361
Maximun sound level	dB(@7m)	96

Engine-DCEC Cummins

Model	6BTAA5.9-G2	
Aspiration	Turbo, Air/Air Cooling	
Fuel system	PN type	
No. cylinders	6 in line	
Displacement	Liquid	5.9
Bore*Stroke	mm	102*120
Compression ratio	16.5	
Rated speed	r/min	1800
Rated net power(with fan)	Kw	130
Governor type	Electrical	
Start Motor	V	24

Exhaust System

Exhaust gas flow	m³/min	19.44
Exhaust gas temp	°C	495
Max back pressure	kPa	10

Aspiration System

Max inlet pressure	kPa	6.35
Combustion volume	m³/min	8.7
Air flow	m³/min	190

Fuel System

100% load(Prime power)	L/h	27.8
75% load(Prime power)	L/h	20
50% load(Prime power)	L/h	13
Fuel tank capacity	L	250

Lubrication System

Oil capacity	L	16.4
Oil consumption	g/kwh	≤4
Oil pressure	kPa	345
(continuous operation)		

Cooling System

Coolant capacity	L	29
Thermostat operation range	°C	82-95
Max water temperature	°C	104

Alternator

Model	LK274D
	STAMFORD UCI274D
Phase	3
Voltage	V 220/127
Wiring Type	3 Phase 4 wire, Y type
Bearing	1
Power factor	0.8
Frequency	Hz 50
Prime power	KVA 138/150
Exciter Type	Brushless, self-excitation
Voltage regulation	% ±0.5
Protection Grade	IP 23
Insulation grade	H/H
Altitude	m ≤1000

Controller-DEESEA

Model	DSE6120
-------	---------

Protective functions:

- Low oil pressure
- High water temperature
- High/low voltage
- High Engine Temperature and Overspeed.
- Voltage regulator frequency regulator
- Emergency stop
- Start failure



Control Module Options



- Auto generator control module
- Control module with "Three Remote Control" functions
- ATS auto load transfer screen
- Synchronising control modules
- Power output cabinet

Standard Features

- Engine(DCEC Cummins)
- Radiator 50°C max,fans are driven by bel
- 24V charge alternator
- Alternator: single bearing alternator IP23, insulation class H/H
- Standard auto control system
- One set of air filter, fuel filter, oil filter
- Main line circuit breaker/MCCB
- Base fuel tank
- Two 24V batteries, rac and cable
- Exhaust system(Ripple flex exhaust pipe, exhaust siphon, flange, muffler)
- User manual

Options

- Battery charge
- Engine heater
- Alternator heater
- PMG
- Water oil separator
- Daily fuel tank
- Remote control panel
- Automatic transfer switch/ATS
- Switch box
- Standard: ● Options:○

Warranty*

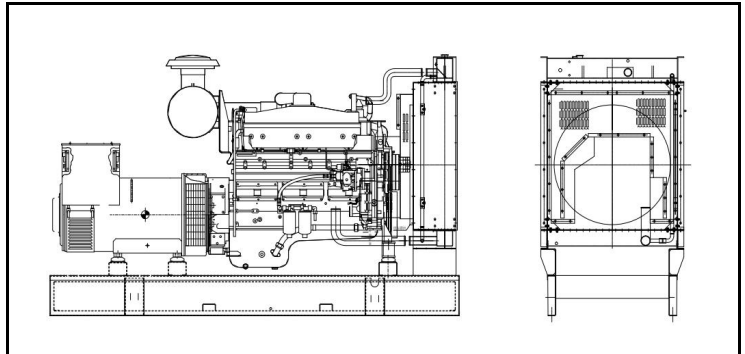
Cummins Engine

12 months from date of purchase and 1000 hours.

Generator

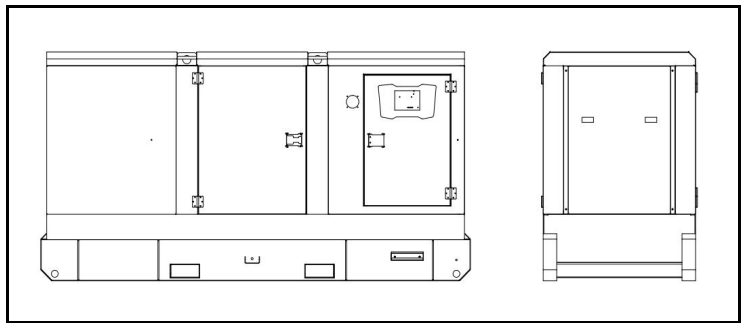
12 months from date of purchase or 1000 hours (whichever occurs first).

Unit Dimensions(Basic unit)



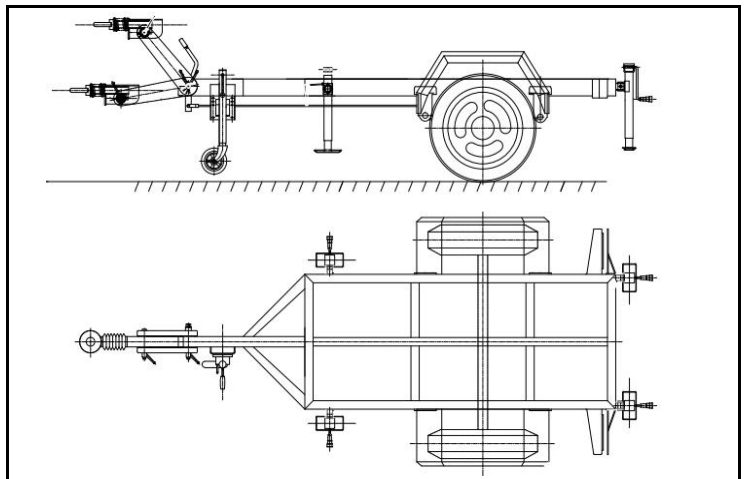
Open Type

L*W*H	mm	2350*900*1445
Weight	kg	1150



Silent Type

L*W*H	m	3180*1130*1650
Weight	kg	1700



Trailer Option

L*W*H	mm	4400*1900*950
Max loading Weight	kg	1800